



Part Number 810002

GSM, UMTS, LTE antenna, wall mounting for indoor or outdoor use, 5m low-loss cable, SMA male connector

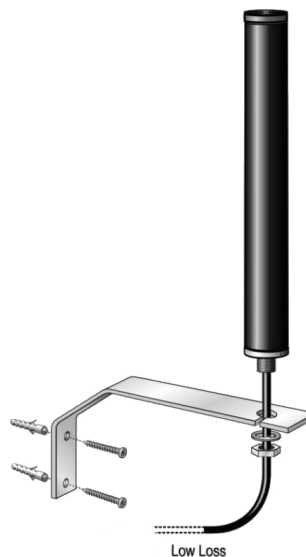
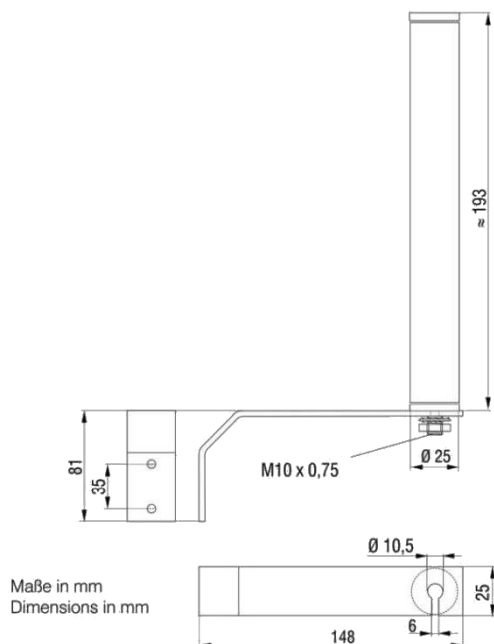
Technical Data

2G/3G/4G - GSM Dual-Band, UMTS, LTE, WLAN – Antenna

Part Number 810002

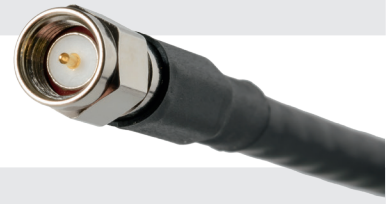
Radio Networks	LTE 800 (4G)	GSM 900 (2G)	GSM 1800 (2G), UMTS (3G)	WiFi	LTE 2600 (4G)
Frequency	790-862 MHz	890-960 MHz	1710-2170 MHz	2400-2485 MHz	2500-2690 MHz
	VSWR			≤ 2.0 : 1	
	Gain			≈ 2dbi	
	Impedance			50 Ω	
	Polarization			Linear, vertical	
	UV resistance			exists	

All stated values were determined without cable.



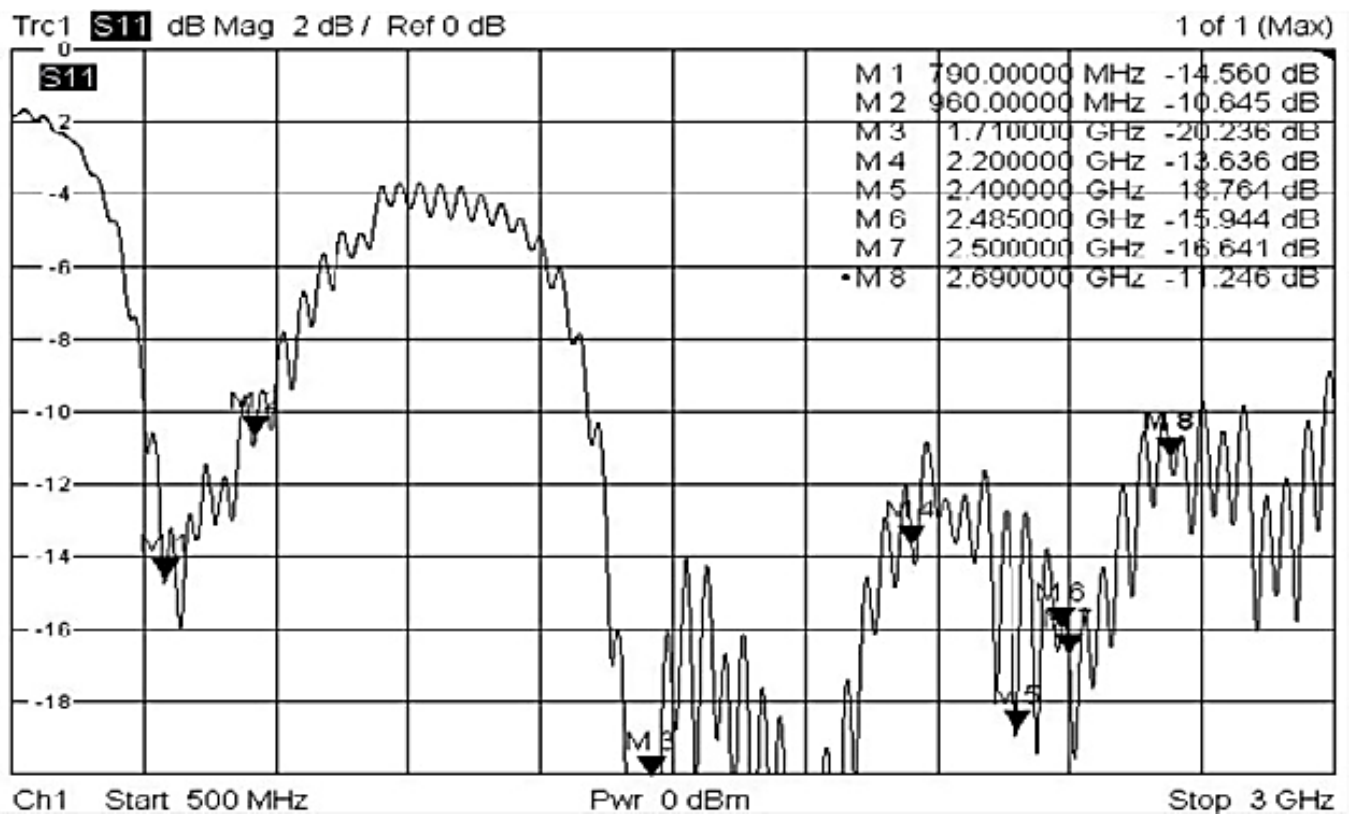
Mechanical Data

Dimensions (ØxH)	ca. 25 mm x 193 mm	
Connecting cable	LowLoss	
Variants SMA:	GS-ANT-18-200-5M	5 m SMA (m)



RoHS conform

Return Loss:



Technical changes and printing errors reserved.
49/20